

- A_ URBAN CORE**
- HEADQUARTER'S CORE
 - COMMERCIAL OFFICES / RENTALS
 - MIXED USE BUSINESS / PARKING GARAGES
 - HOSPITALITY / CIVIC SPACES

- B_ GENERAL URBAN**
- MIXED USE RESIDENTIAL
 - MULTIFAMILY DWELLINGS
 - CIVIC (STADIUMS, ARENAS, MUSEUMS, ETC.)

- C_ SUBURBAN**
- SINGLE FAMILY SUBDIVISIONS
 - RETAIL / COMMERCIAL
 - PARKS, RECREATIONAL

- D_ RURAL RESERVE**
- SINGLE FAMILY DWELLINGS
 - RECREATIONAL / FARMING
 - TRAVEL HUBS / DISTRIBUTION CENTERS

URBAN CORE
(25 ACRES)

GENERAL URBAN
CIRCLE
(200 ACRES)

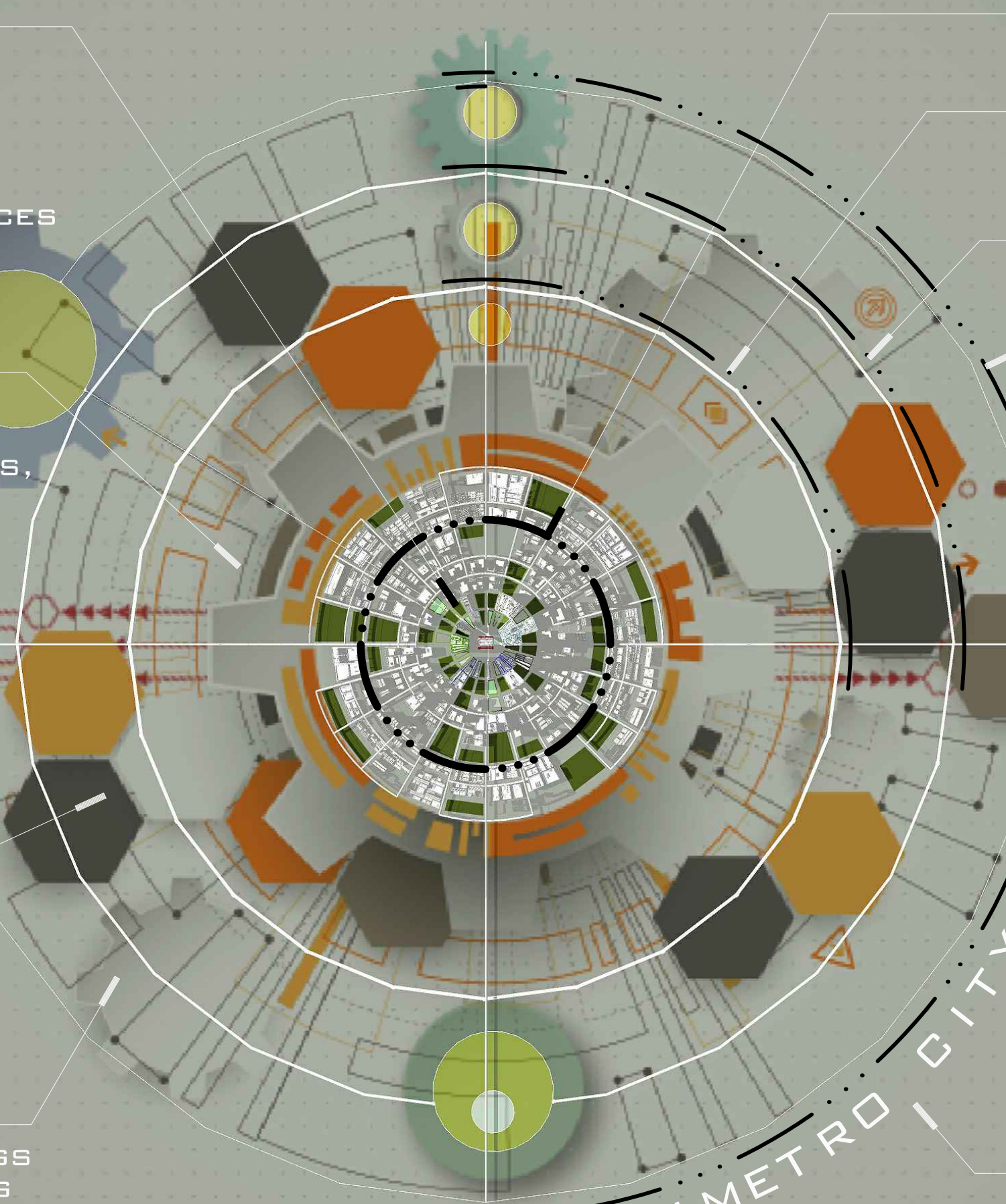
SUBURBAN CIRCLE
(350 ACRES)

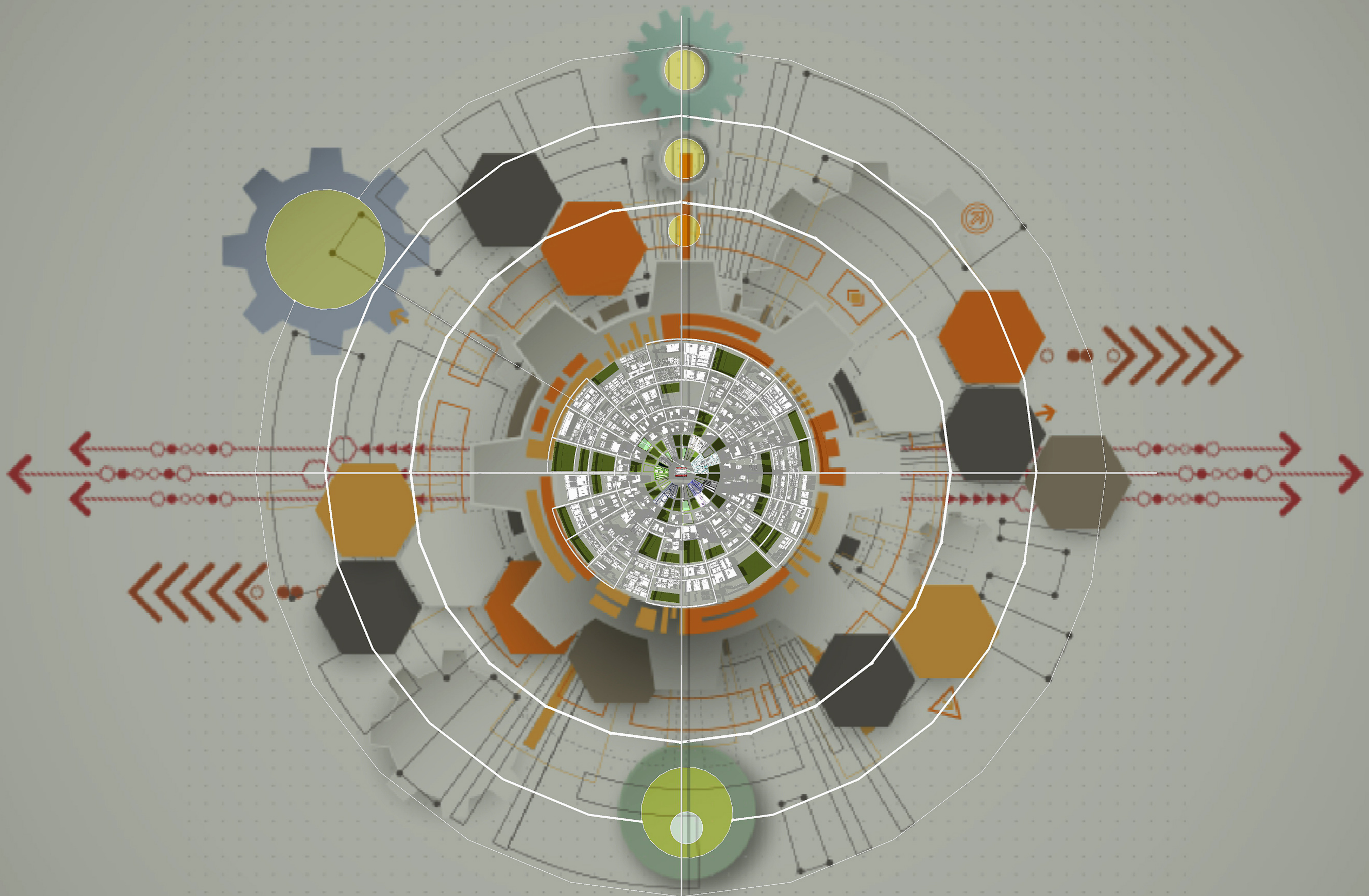
RURAL RESERVE
CIRCLE
(1 MILE DIAMETER)

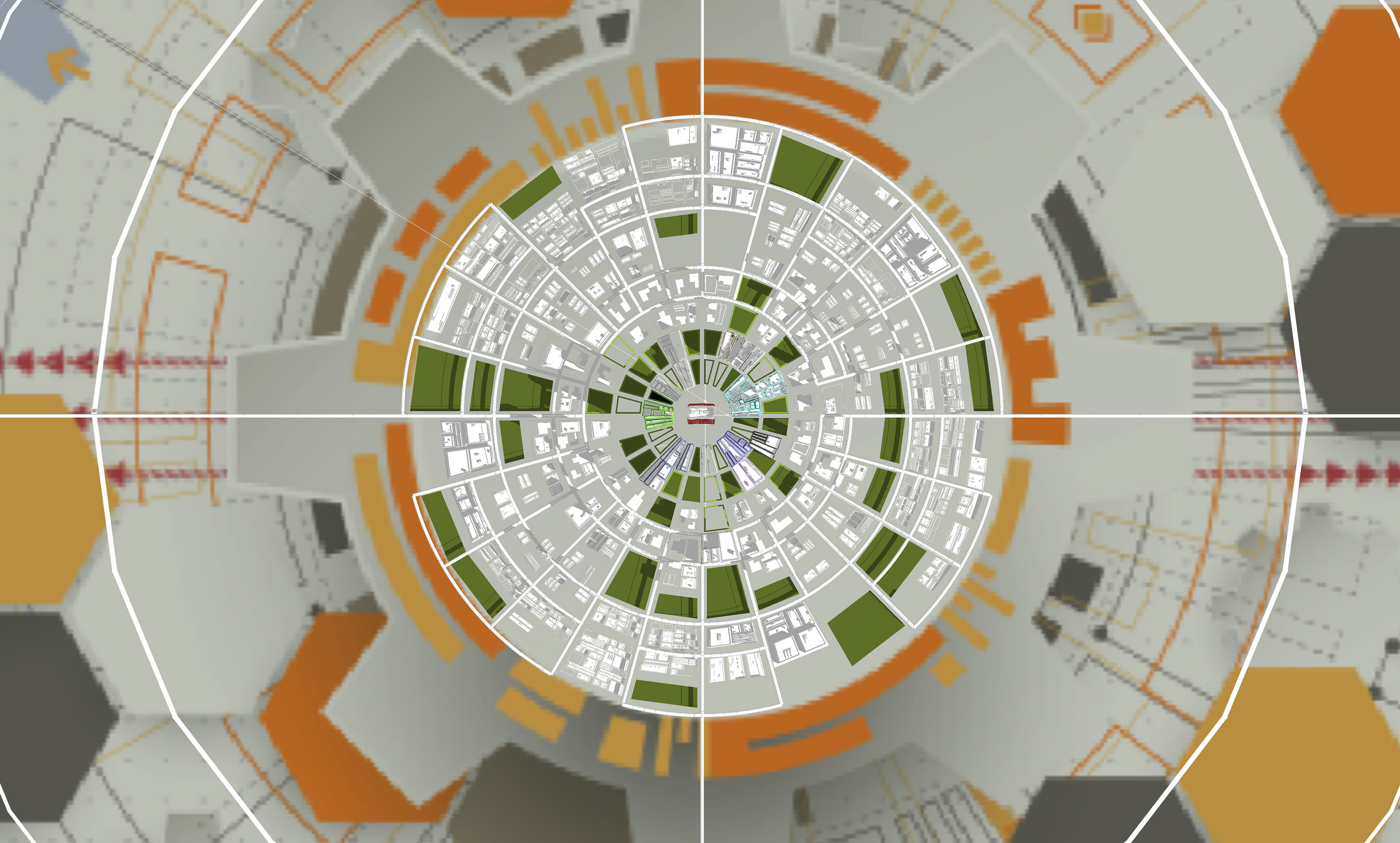
CITY LIMITS

AMERIMETRO

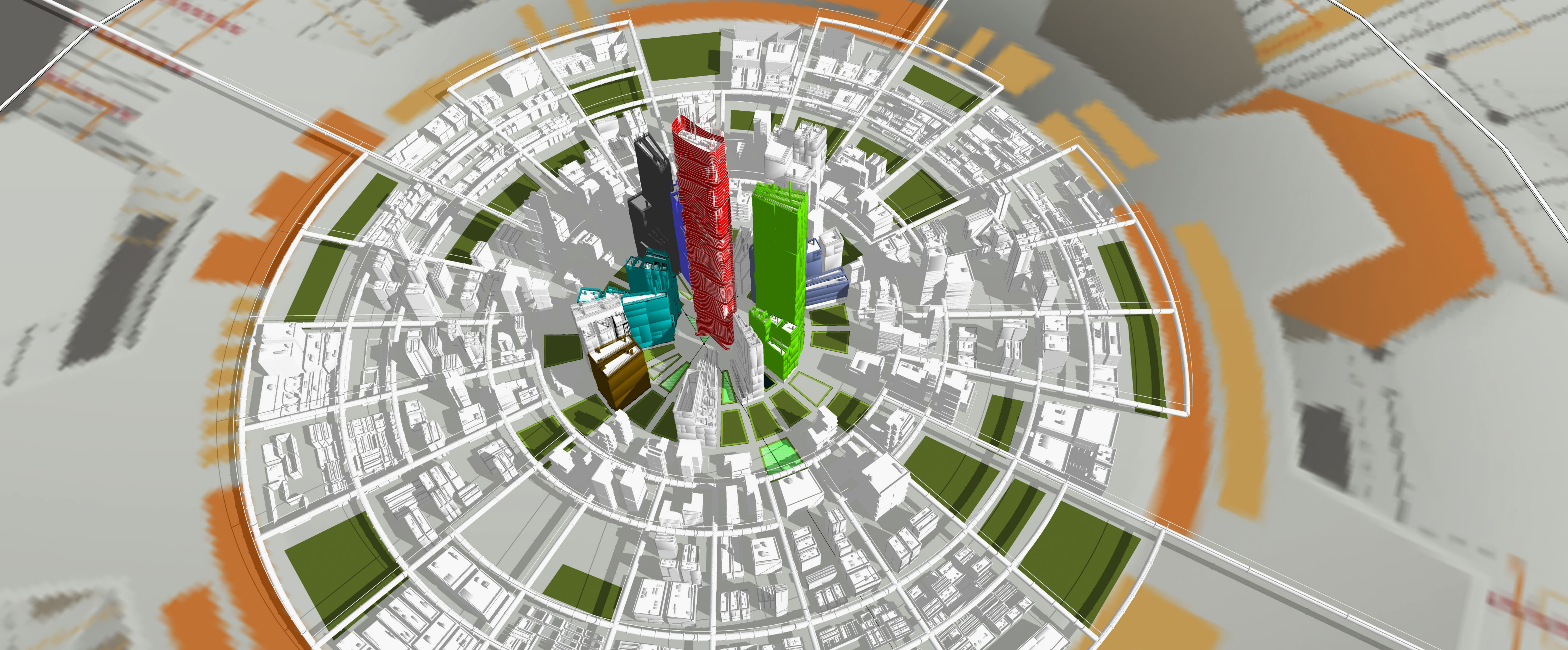
SMART TRAIN
WHEEL URBAN
CONCEPT

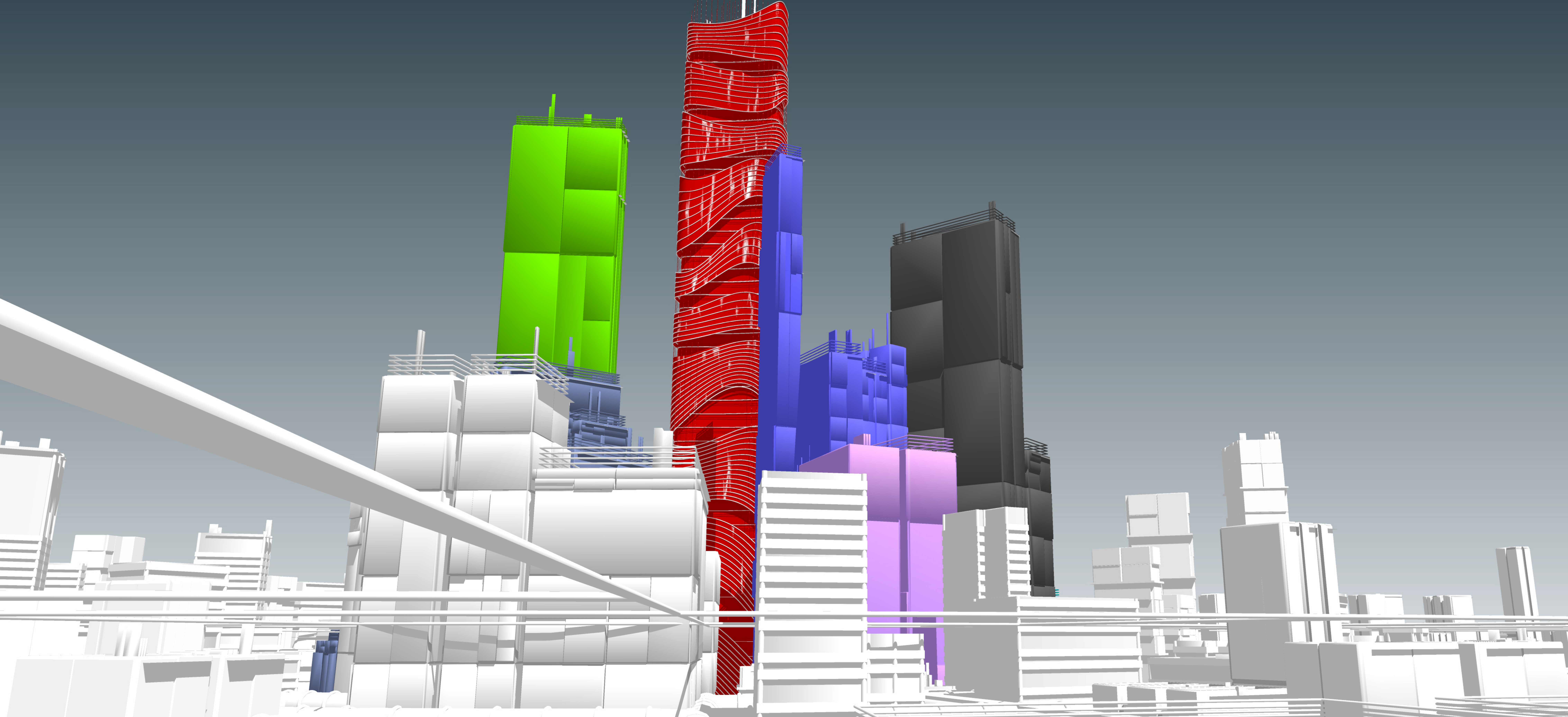


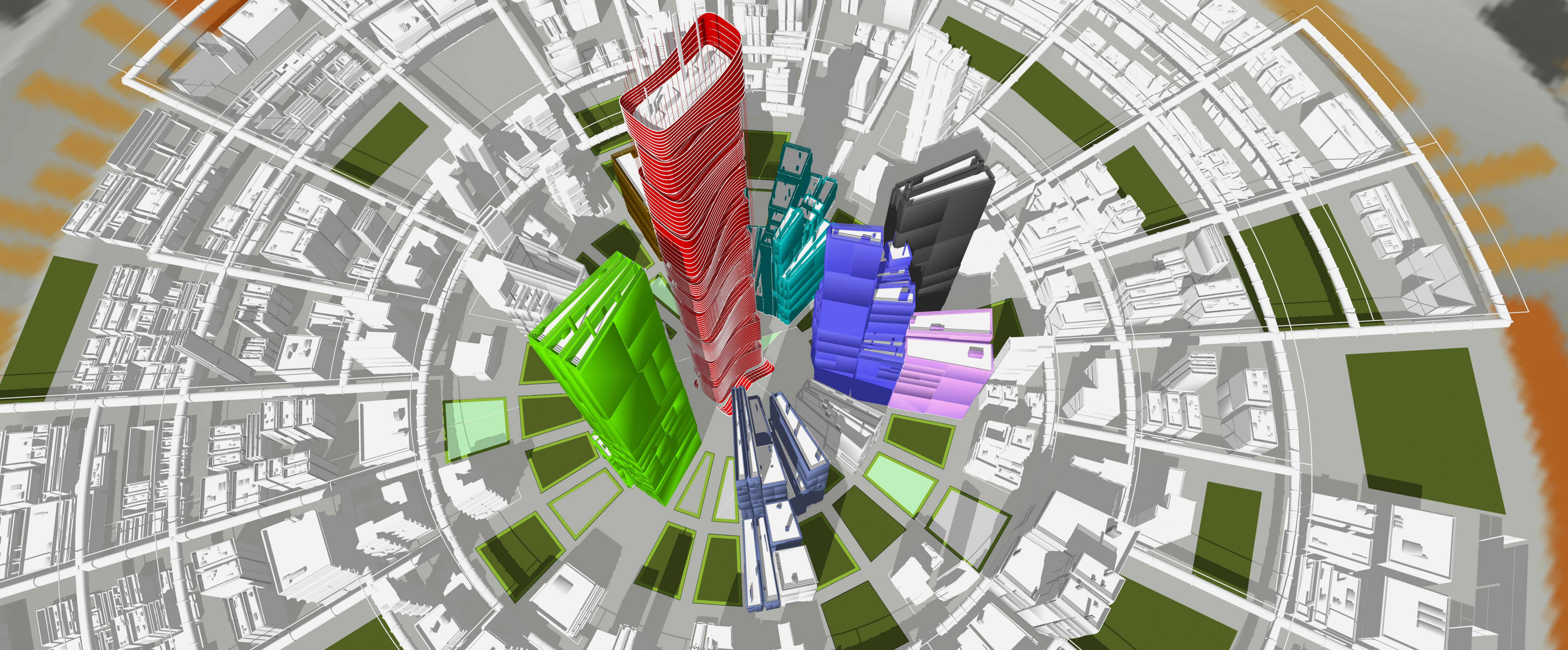


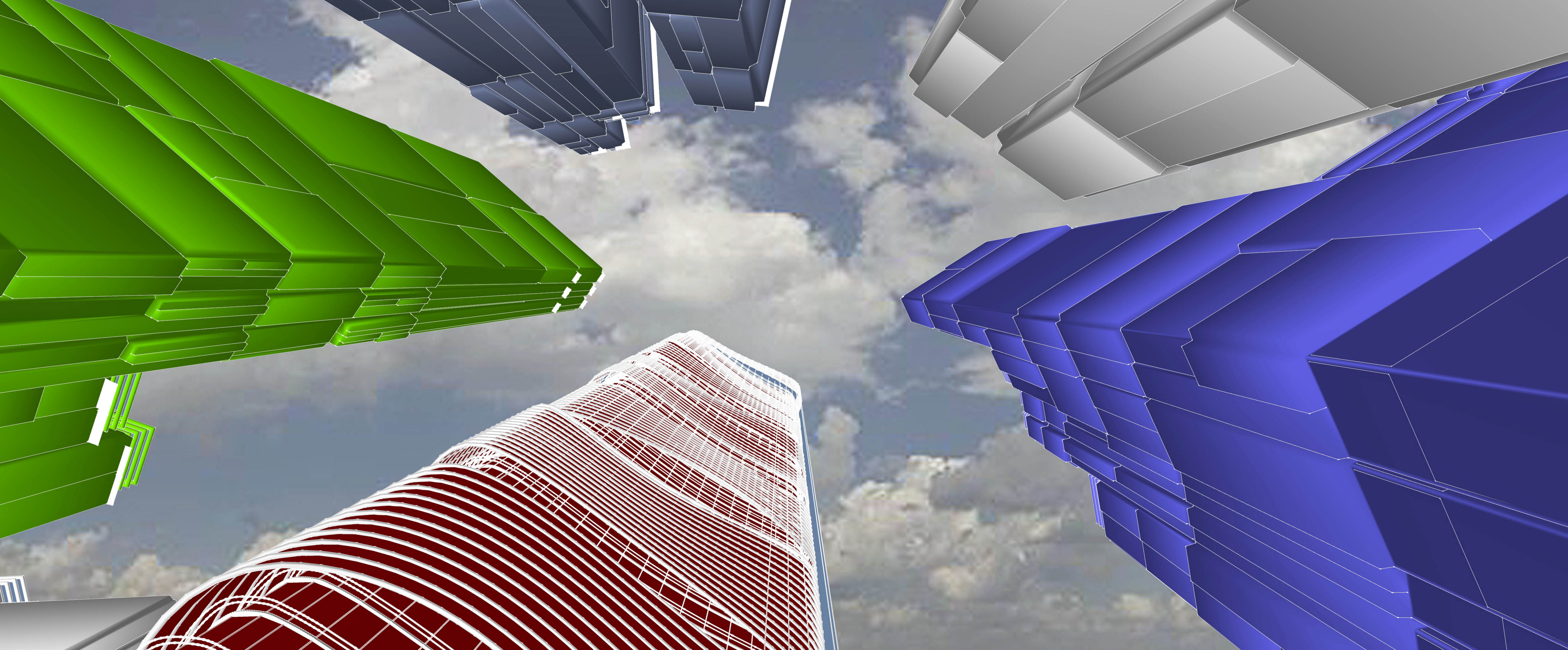












GENERAL
URBAN

URBAN CORE
(N.T.S.)

GENERAL
URBAN



BLDG. #1: RED
BLDG. #2: GREEN

BLDG. #3: VIBRATE BLUE
BLDG. #4: DARK GREY

BLDG. #5: BLUEPRINT BLUE
BLDG. #6: CYAN

BLDG. #7: PURPLE
BLDG. #8: BROWN